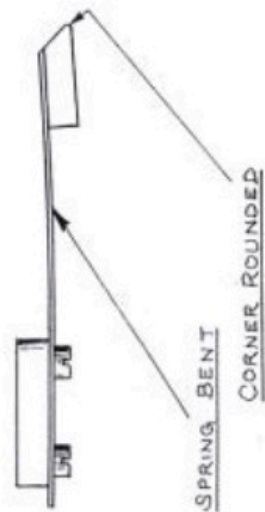


STIRRUP CATCH

EARLY TYPE

FINAL TYPE



GRAVITY-LEVER CATCH

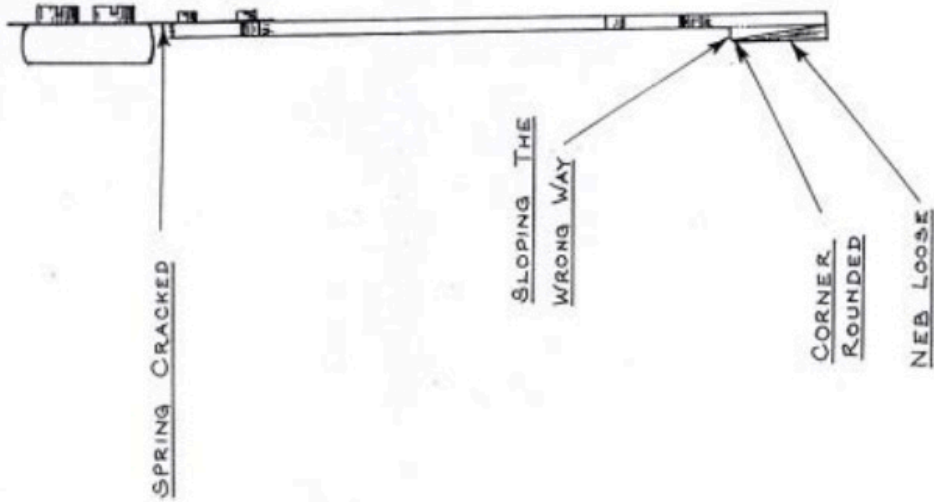


Fig. 13. CATCH FAULTS

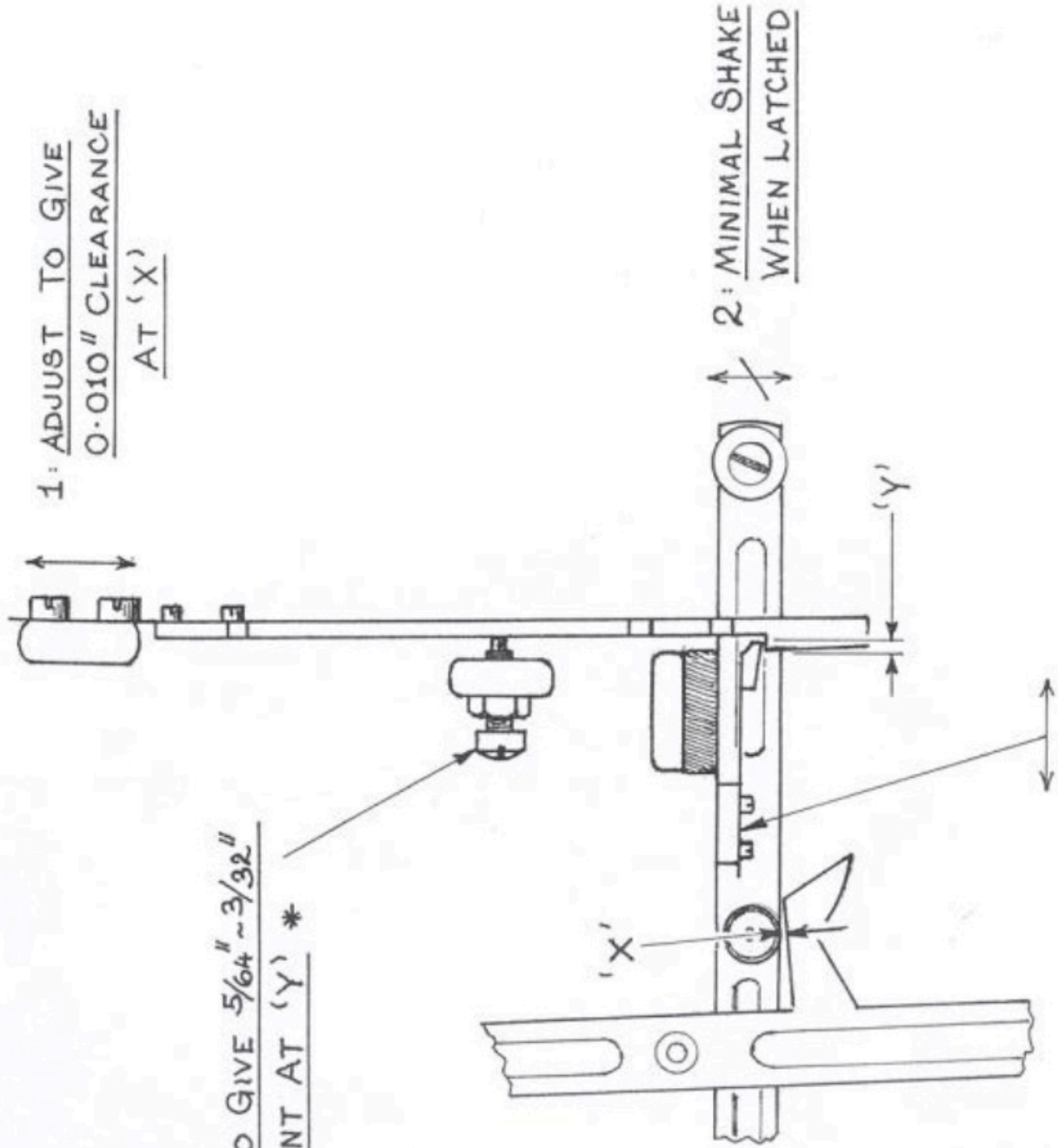
- POINTS TO LOOK FOR

ANY ONE OF THE FAULTS SHOWN HERE

CAN CAUSE UNRELIABLE LATCHING OF THE

GRAVITY LEVER AND RAPID GAINING OF

THE SYSTEM



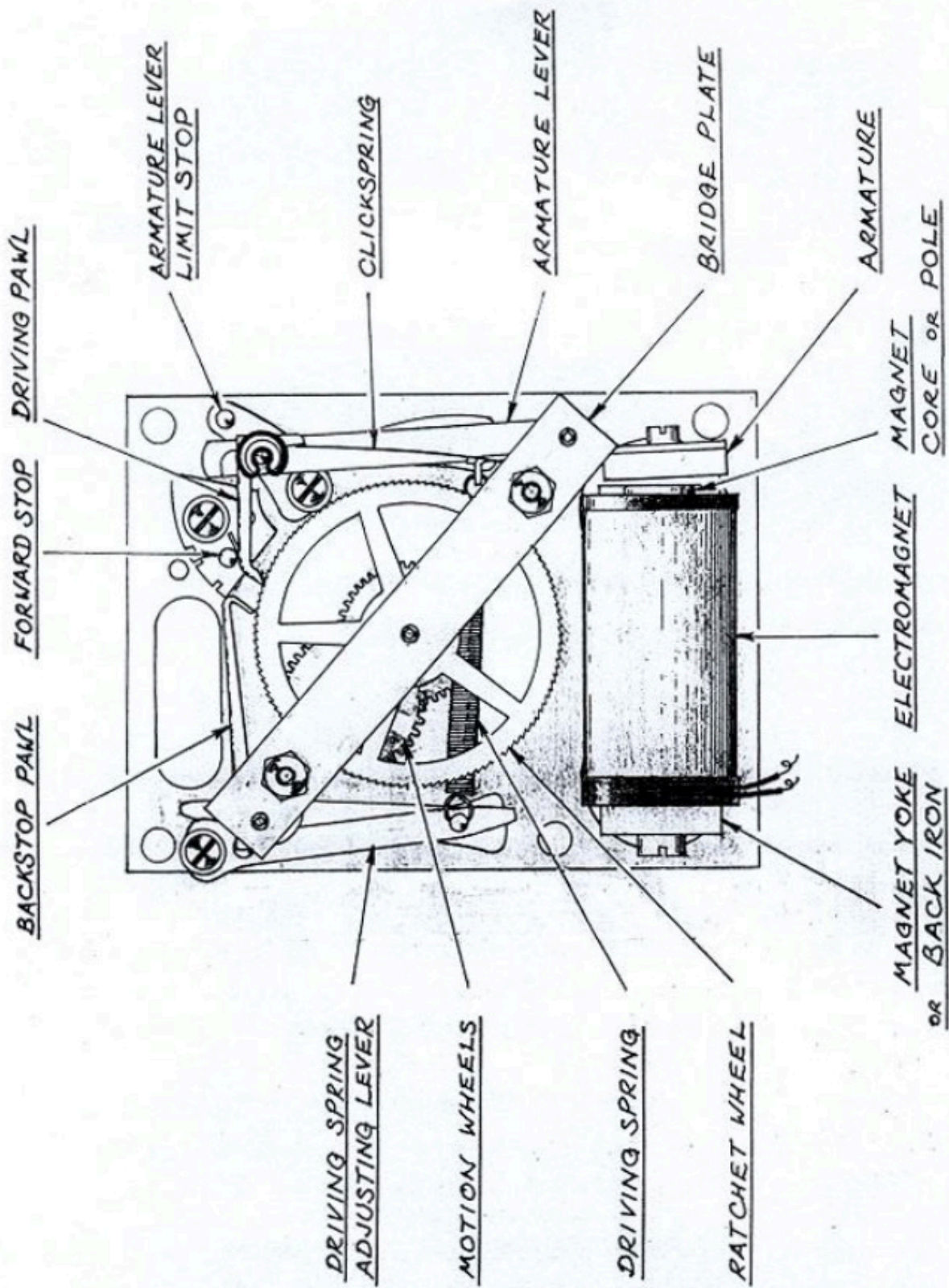
1: ADJUST TO GIVE
0.010" CLEARANCE
AT 'X'

4: ADJUST TO GIVE $\frac{5}{64}'' \sim \frac{3}{32}''$
ENGAGEMENT AT 'Y' *

2: MINIMAL SHAKE
WHEN LATCHED

3: ADJUST IF NECESSARY TO GIVE
CORRECT DROP POINT OF ROLLER, (b)

(a)



(b)

